



The color chips presented on this Color Card are simulations of Wilflex colors. Slight variations may be seen between these chips and actual Wilflex inks. Printed results may vary based on production methods such as ink film thickness, opacity and substrate.

Wilflex™ Top Score LC Victory Colors



Standard Athletic Colors Printer-friendly solutions for athletic printing on automatic and manual printing presses.

DOWNLOAD THIS CARD AND HOVER OVER THE INK SWATCH TO REVEAL PMS CODES.

80550
Top Score LC
Victory Lemon Yellow

81550
Top Score LLC
Victory Bright Gold

32550
Top Score LC
Victory Tn Orange

34550
Top Score LC
Victory Orange

30550
Top Score LC
Victory Tx Orange

43550
Top Score LC
Victory Red

41550
Top Score LC
Victory Cardinal

44550
Top Score LC
Victory Maroon

40550
Top Score LC
Victory Pink

50550
Top Score LC
Victory Purple

67550
Top Score LC
Victory Teal

61550
Top Score LC
Victory Light Blue



62550
Top Score LC
Victory Royal

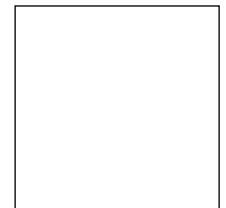
60550
Top Score LC
Victory Navy

70550
Top Score LC
Victory Green

74550
Top Score LC
Victory Dark Green

86550
Top Score LC
Victory Vegas Gold

90550
Top Score LC
Victory Volt



20550
Top Score LC
Victory Brown

13550
Top Score LC
Victory Gray

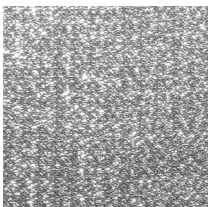
14550
Top Score LC
Victory Charcoal

16550
Top Score LC
Victory Anthracite

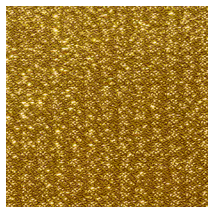
19000
Top Score LC
Black

2200
Top Score LC
White

Metallics



15370
Infinite FX Silver
Shimmer



85370
Infinite FX
Pale Gold Shimmer

TOP SCORE VICTORY CODE	COLOR	BSN CODE						
80550	Yellow	107	44550	Maroon	504	70550	Green	356
81550	Bright Gold	1235	40550	Pink	213	74550	Dark Green	3435
32550	TN Orange	151	50550	Purple	268	86550	Vegas Gold	4515
34550	Orange	172	67550	Teal	322	90550	Volt	809
30550	TX Orange	1605	61550	Light Blue	659	20550	Brown	476
43550	Red	200	62550	Royal	661	13550	Gray	422
41550	Cardinal	202	60550	Navy	289	14550	Charcoal	431
						16550	Anthracite	447

2100 Epic Armor LC Gray 2100 Epic Armor LC Black



Wilflex™ Top Score LC Victory Colors



Wilflex™ Top Score Low Cure (LC) Victory colors deliver maximum coverage with the fewest strokes to provide color consistency when printing directly onto fabric or over an under base. These popular industry colors provide excellent on-press performance, print results, and bleed protection for printing on athletic garments.



APPROVED COLORS

Wilflex Top Score LC Victory colors for BSN Sports™ are approved by in-house BSN print shops and authorized to BSN Sports printer network. Access the premixed offering of BSN Core 24 Victory Colors manufactured by Wilflex.



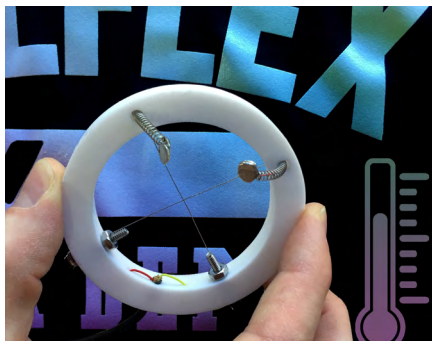
BLEED PROTECTION

Is ink bleed still an obstacle when printing directly onto polyester fabrics? Achieve excellent bleed protection from Wilflex Top Score low cure color inks and minimize the risk of discoloring your prints resulting from dye migration.



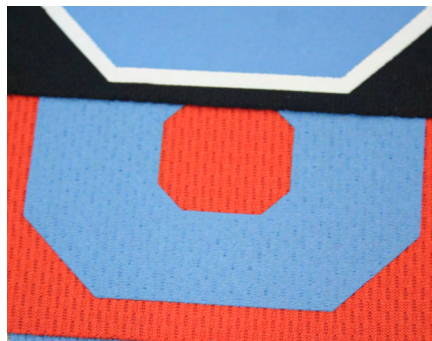
BETTER ACCURACY

Wilflex Top Score LC Victory colors deliver repeatable color accuracy across a wide range of substrates using both a print-flash-print and an under base technique. Achieve the target color faster and with fewer strokes, saving time and reducing cost.



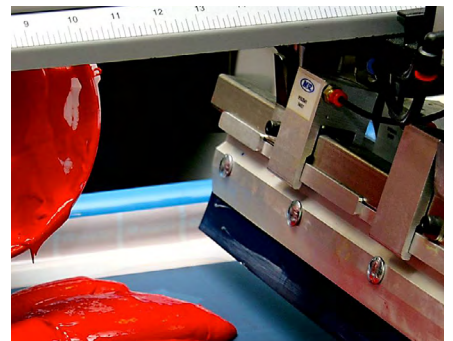
LOW CURE

Further protect expensive garments when decorating with low cure inks. Save energy and reduce the probability of costly heat-related defects.



MATTE FINISH

Wilflex Top Score LC Victory colors deliver a soft look for an athletic print. Stay on top of this industry-driven trend and win with customers.



PRINTABILITY

Top Score LC Victory colors print through a wide range of meshes and excel on automatic or manual presses. From small runs to large, Wilflex Top Score LC Victory colors hit the goal!

For more information visit www.wilflex.com/topscore.

Part number MC90000918WE

© 2023 Avient Corporation All Rights Reserved Wilflex™ inks by Avient. Not all ink ranges are available in every country. All Wilflex inks are formulated to print on textiles. Please consult current product information bulletin for specific product information, precautions and suggested applications. The information presented in this color card is given in good faith, but pre-printing and testing for desired properties are strongly recommended.

